



Study Area: Cultural and Natural Heritage

Heritage sites are human and natural resources that **contribute to a specific country's, region's, area's, or group's culture**. These resources are valuable for their national, local, historical, archaeological, or architectural interest.

Studying cultural and natural heritage resources allows the study team to discern whether the proposed action will impact any of these important Cayman resources and propose minimization or mitigation efforts where needed.

Specific cultural and natural heritage resources to be assessed within the EIA:



Central Mangrove Wetland



Mastic Trail



Mastic Reserve

The EIA will assess the potential impact on these resources of construction of the EWA, such as:

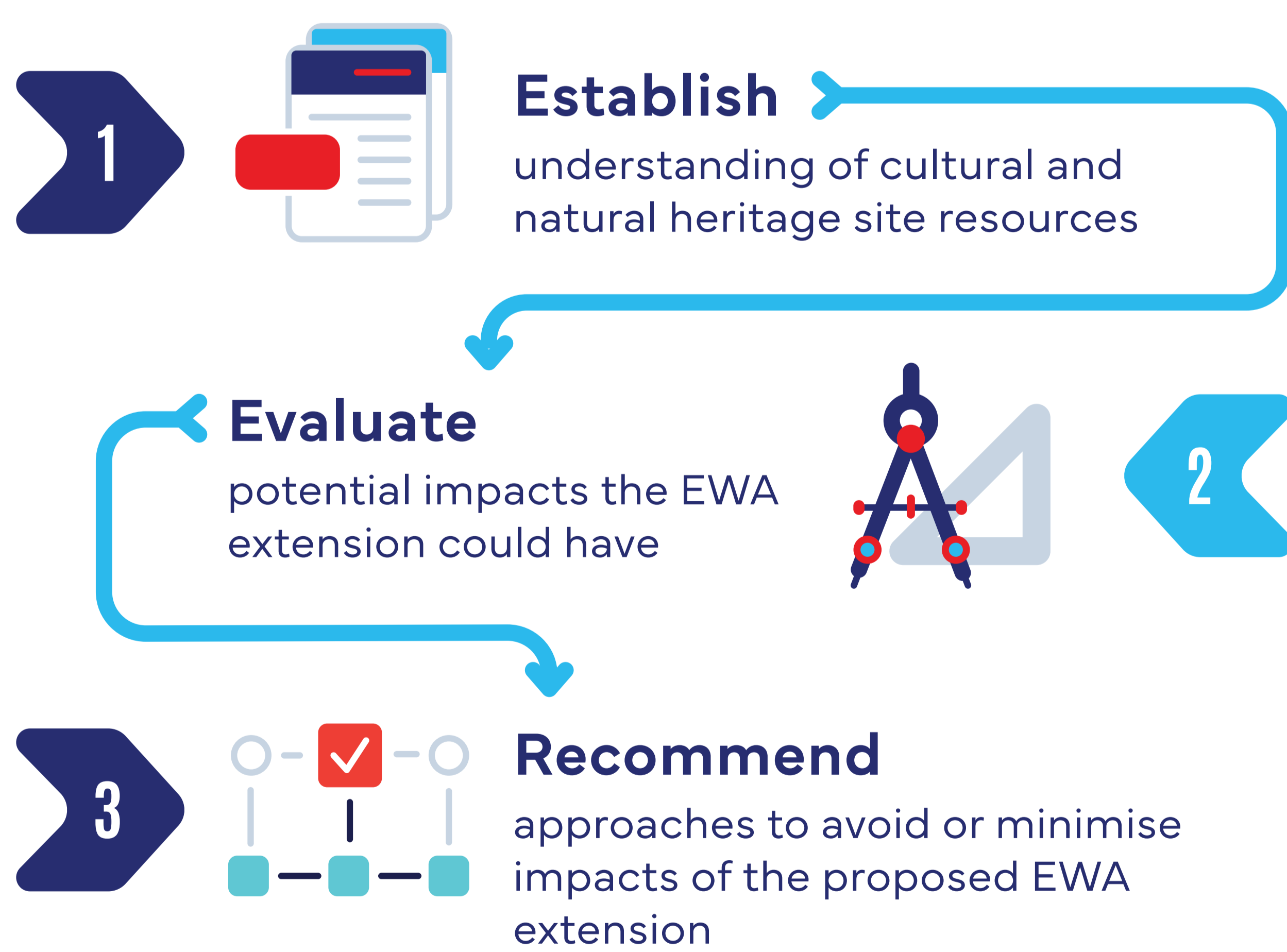
/// Land use changes

/// Habitat reduction

/// Accumulation of different effects on the same resource

/// Potential release of material that may impact sensitive habitats and the underlying aquifers

The EIA will assess the potential impact on these resources of construction of the EWA, such as:



Potential measures to mitigate EWA impact on cultural and natural resources could include:



Designing with site avoidance in mind



Landscaping and land contouring



Regional ecological restoration



Creation of hydrological components